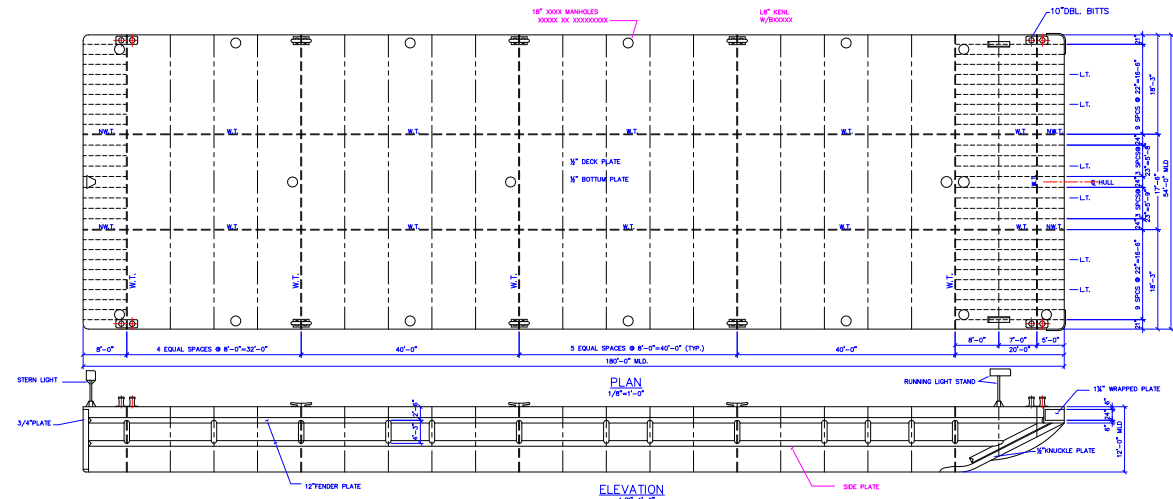
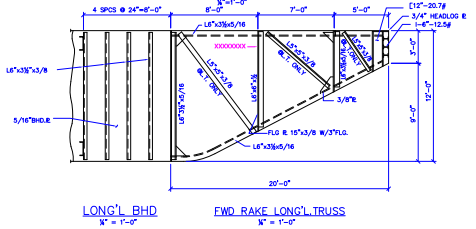
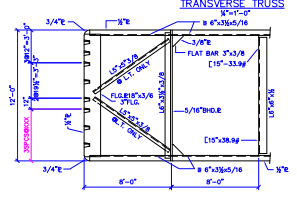
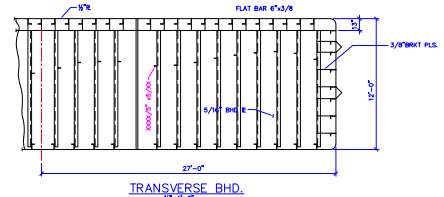
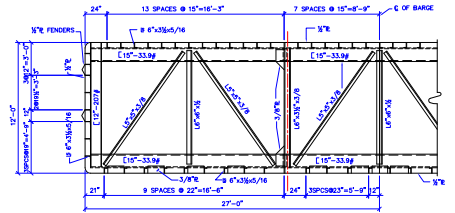


1 2 3 4



- Notes:
1. Welding to be in accordance with ABS rules and regulations act.
 2. Barge designed for deck loading of 1500 lbs.



XXXXXXXXX LONG'L TRUSS
1/2\"/>



Canal Barge Company, Inc.
835 Union Street
New Orleans, LA 70112
Phone 504.581.2424
www.canalbarge.com

Deck Cargo Barge Ocean Service
180 x 54 x 12
General Arrangement
CMS 751 - 756

LEGAL NOTICE: General arrangement and other drawings are provided for informational purposes only. Canal Barge Company, Inc. does not warrant the accuracy of any drawing of any barge. By accessing and/or downloading any barge drawing, user agrees to hold harmless Canal Barge Company, Inc. from any claim or loss that may arise from the use of those drawings or any errors or omissions therein.

1 2 3 4